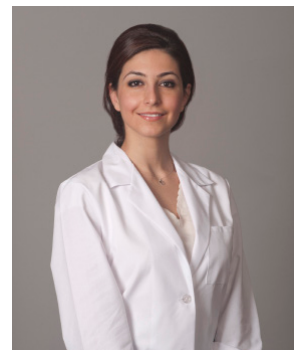
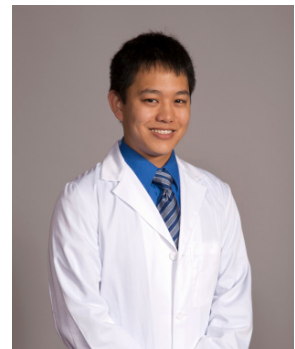




TSO Photography Guidelines

Key points:

- Must wear white lab coat
- Shirt/dress under white lab coat should be light or medium in color (preferably blue). Men are encouraged to wear a tie.
- Various positions (straight on, left angle view and right angle view (see examples to the right))
- DO NOT CROP shoulders, we need to see both shoulders in the photo
- Shoot from the waist up
- Background should be neutral, preferably grey and/or white
- If there are 2 or more doctors in the practice, please shoot them together and separate with the instructions noted above.
- Expressions: We are looking for a genuine, natural smile.
- Please provide high resolution digital images (300 dpi)



Please email images to:

robin@tso.com and connie@tso.com

Large multiple digital images can be sent to a TSO dropbox. A link will be provided to you.

For dropbox link, contact Robin Oloyede: robin@tso.com

NOTE: TSO will reimburse the cost of photography from your local photographer/studio if you are unable to use a photographer provided by TSO in the Houston region.